

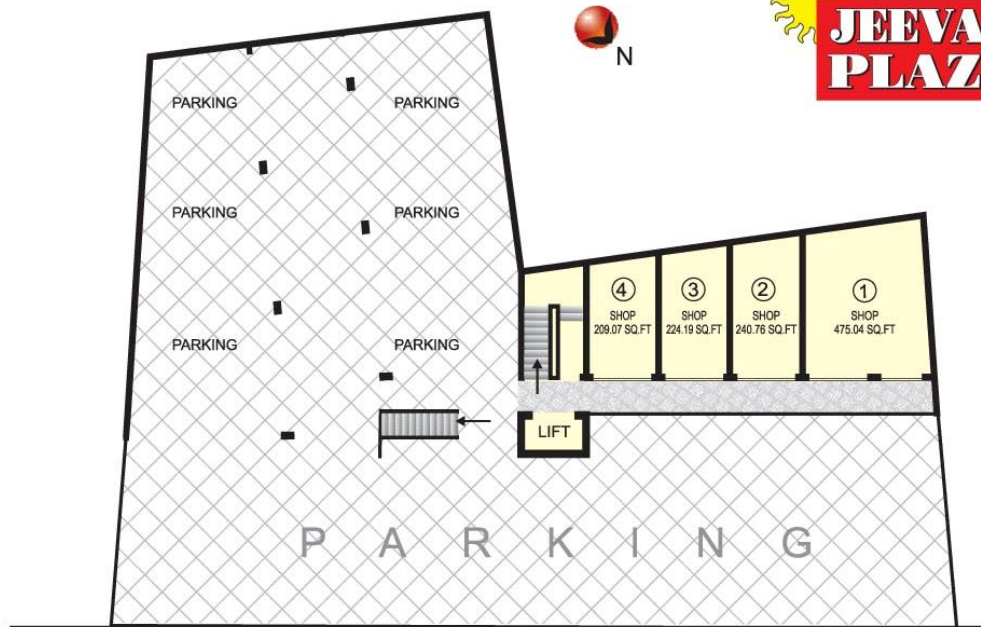


# JEEVAN PLAZA

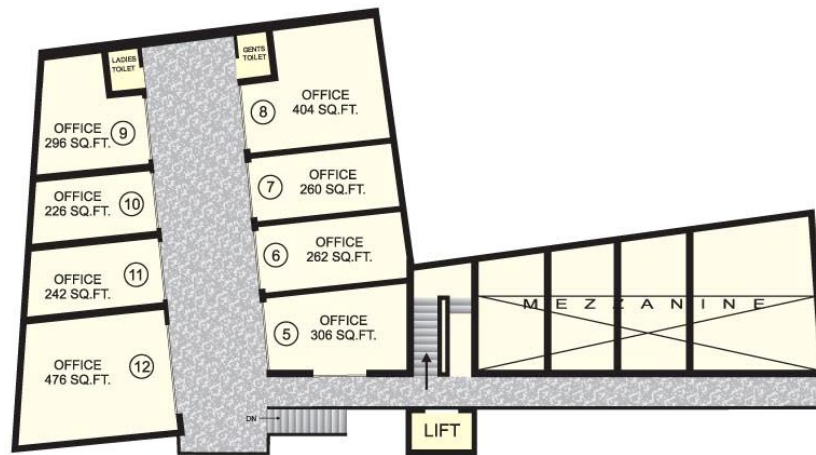
*A well planned Commercial Complex*



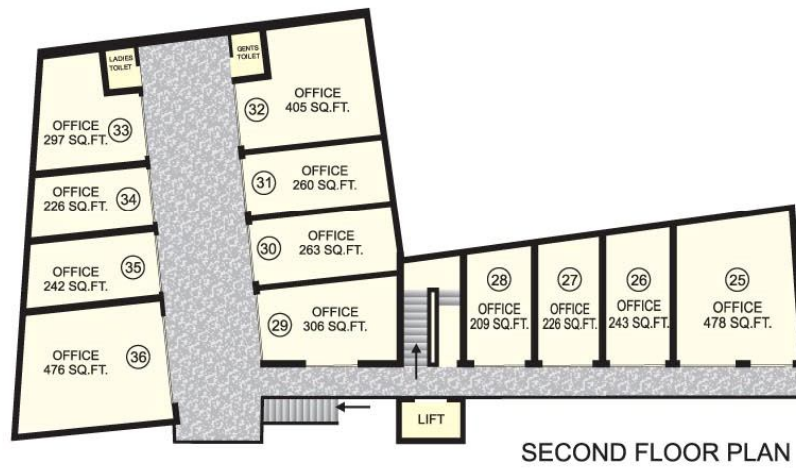
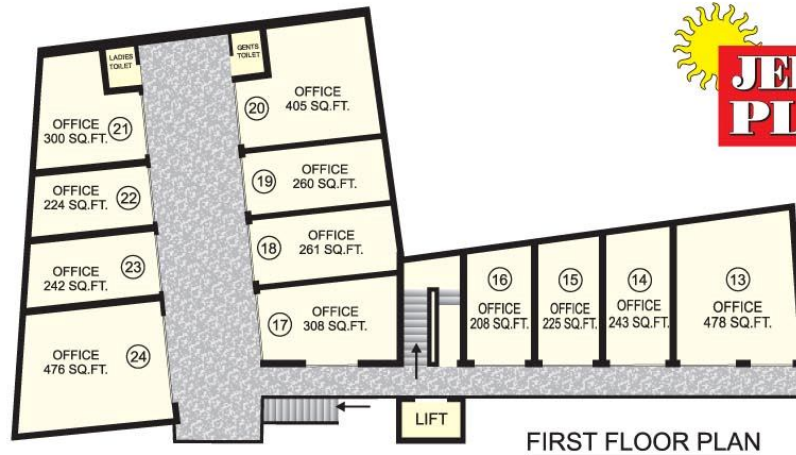
OPP. RAJEEV NAGAR, SHANKAR NAGAR,  
PANDRI MARG, AVANTI BAI CHOWK, RAIPUR (C.G.)



GROUND FLOOR PLAN



MEZZANINE FLOOR



**SPECIFICATIONS :**

- Foundation / Structure :**  
R.C.C. Framed structure in cement concrete  
M-20 with earthquake Resistant Design
- Masonry :**  
9" Red Brick Wall
- Plastering :**  
13mm / 20 mm thick cement plaster, 1:5 for inside outside
- Finish :**  
Snowcem painting for outer finish and wall  
care cement putty for Inside.
- Flooring :**  
Ceramic Vitro tiles in shops and designer tiles of ultra on corridor.
- Electrification :**  
High quality fire proof copper wire of Reputed company

**FACILITIES :**

1. Ample Parking space
2. Otis Lift
3. Paving in open area
4. Three phase meter connection
5. Common toilet on all floors
6. Attached toilet facilities
7. Fire proof copper wiring of Reputed company
8. Shops without columns in between
9. Situated in very prime location.
10. Stainless steel Railing on the corridors
11. Provision for A.C. / Cooler
12. Security Provided for Complex.
13. Advertisement spaces Provided
14. Ready to Possession.



## LOCATION PLAN

AIRPORT	12.0 KM
STATION	3.0 KM
BUS STAND	1.5 KM
HOSPITAL	0.5 KM
SCHOOL	0.2 KM
PARK	0.2 KM
BANKS	0.2 KM
PETROL PUMP	0.5 KM



**A PROJECT BY**  
**SINGHANIA GROUP**  
 Builders, Colonisers & Civil Contractors  
 "Majusha" 15/480, Civil Lines,  
 Raipur-492 001 (C.G.)  
 Ph.: 0771-2539500, 2539600  
 Fax : 0771- 2225500  
 Email : rohits77@gmail.com

**FOR BOOKING, DETAILS & SITE VISIT :**  
**"JEEVAN APARTMETNS"**  
 Shankar Nagar Road,  
 Raipur- 492 001 (C.G.)  
 Ph.: 96698 04400, 3200450

**ARCHITECT :**  
**SANDEEP+ASSOCIATES**  
 Sandeep & Neena Shrivastava,  
 2-3, Netaji Subhash Stadium  
 Motibagh, Raipur-492 001 (C.G.)  
 Ph.: 98261-27999, 4207900

**NOTE :** The project consultants / Promoters / Developers has the right to change the plans, Design and Specification or revise the Scheme as and when as per the buy laws and Architects convenience.